



Schweizerische Eidgenossenschaft
Confédération suisse
Confederazione Svizzera
Confederaziun svizra

Eidgenössisches Departement für
Umwelt, Verkehr, Energie und Kommunikation UVEK

Bundesamt für Energie BFE

Fehler! Keine Dokumentvariable verfügbar.

RENEW – RENEWABLE FUELS OF ADVANCED POWERTRAINS

LIFE CYCLE ASSESSMENT OF BTL-FUELS

Schlussbericht

Ausgearbeitet durch

Niels Jungbluth, ESU-services GmbH

Kanzleistr. 4, CH-8610 Uster, www.esu-services.ch, jungbluth@esu-services.ch

Impressum

Datum: 17. Januar 2008

Im Auftrag des Bundesamt für Energie, Forschungsprogramm Biomasse

Mühlestrasse 4, CH-3063 Ittigen

Postadresse: CH-3003 Bern

Tel. +41 31 322 56 11, Fax +41 31 323 25 00

www.bfe.admin.ch

BFE-Projektleiter: Bereichsleiter, bruno.guggisberg@bfe.admin.ch

Projektnummer: 100550

Bezugsort der Publikation: www.energieforschung.ch

Für den Inhalt und die Schlussfolgerungen ist ausschliesslich der Autor dieses Berichts verantwortlich.

Inhaltsverzeichnis

Zusammenfassung	2
Introduction.....	3
Introduction to the methodology.....	3
Goal and Scope of the study	3
Production routes developed in the RENEW project.....	3
Goal of the LCA	3
Stakeholders and audience	4
Reference flow and functional unit	4
Product system	4
Modelling principle attributional LCA	5
Multi-output process modelling	5
Scenarios	6
Life cycle inventory analysis.....	6
Biomass production	6
Data collection for conversion processes	7
Key figures for starting point calculation.....	8
Key figures for scenario 1	9
Sensitivity analysis.....	9
Electronic data format and background data.....	10
Life cycle impact assessment and interpretation	10
Category indicators in life cycle impact assessment	10
Analysis of category indicators results in the starting point calculation.....	11
Comparison of concepts in the starting point calculation	12
Sensitivity analysis.....	13
Fuel yields per hectare	13
Comparison of concepts in scenario 1	14
Improvement options	15
Conclusions	16
Limitations of the study.....	16
Outlook	17
Critical review	17
Approach.....	17
Summary.....	17
Well-to-Wheel analysis of environmental impacts.....	17
Summer School on Renewable Motor Fuels.....	18
Literature	20

Zusammenfassung

Das europäische Forschungsprojekt RENEW (Renewable Fuels for Advanced Powertrains) hatte zum Ziel, die Produktion von synthetischen Kraftstoffen aus Biomasse weiterzuentwickeln. Die meisten Projektpartner haben dabei technische Fragestellungen zu einzelnen Technologiekomponenten erforscht. Ein Ziel dieses Projektes ist die umfassende Bewertung der verschiedenen Technologie-Optionen hinsichtlich Kosten, Produktionspotential und Umweltauswirkungen.

Von ESU-services GmbH wurde im Rahmen dieses Projektteils das Arbeitspaket zur Untersuchung und zum Vergleich der verschiedenen Verfahrenswege aus Umweltsicht geleitet. Hierbei wurde eine vollständige Ökobilanz gemäss ISO 14040 für die Biomassproduktion, Kraftstoffsynthese und Distribution bis zum Fahrzeug ausgearbeitet. Unterstützt wurden diese Arbeiten durch das internationale Projektteam bei der Datenerhebung und dem Review der Berichte.

In einem ersten Schritt wurde eine Zieldefinition erstellt und mit den Projektpartnern diskutiert. Ziel der Bilanz ist der ökologische Vergleich der Herstellungswege von BTL-Treibstoffen (Biomass-to-Liquid) auf Basis des an den Tank gelieferten Energiegehaltes des Kraftstoffs. Dabei werden als Biomasse-Rohstoffe Stroh, Kurzumtriebsholz und Chinaschilf berücksichtigt. Insgesamt wurden 5 Verfahrenskonzepte miteinander verglichen. Die Modellierungsdaten wurden für Anlagen mit einem Biomassinput von 500MW simuliert.

Die Bewertung der Umweltbelastungen beschränkt sich auf die Indikatoren kumulierter Energieaufwand, Ressourcenverbrauch, Treibhausgaspotential, Sommersmog, Versauerung, Überdüngung, Wasserverbrauch und Inanspruchnahme von Landfläche. Modelliert wurde ein Standardszenario bei dem der Energiebedarf bei der Synthese vor allem intern durch Biomasse gedeckt wird. In einem zweiten Szenario wurde die Treibstoffproduktion dadurch maximiert, dass Strom zur Herstellung von Wasserstoff in erheblichem Umfang zugekauft wird.

Beim Vergleich der Verfahrenskonzepte bestimmt vor allem der Umwandlungsgrad von Biomasse zu fertigem Treibstoff das Ergebnis. Dieser schwankt je nach Verfahren zwischen 26% und 69% bezogen auf den Energiegehalt der verarbeiteten Biomasse. Ein Hauptteil der Umweltbelastungen stammt aus dem Anbau der Biomasse. Somit sind zukünftig neben einer Verbesserung der Verfahrenseffizienz auch Möglichkeiten zur Reduktion der landwirtschaftlichen Umweltbelastungen von Bedeutung. Ferner ist zu berücksichtigen, dass mit sinkendem Umwandlungsgrad die Luftemissionen in Form von Abgas und abgetrennten Gasbestandteilen steigen. Dies ist insbesondere bei der Beurteilung des Sommersmog-Potentials von Bedeutung. Durch die Verwendung von elektrolytisch erzeugtem Wasserstoff kann ein deutlich höherer Ertrag erreicht werden. Aus Umweltsicht macht dies aber nur Sinn, wenn hierfür saubere Stromquellen in beträchtlichem Ausmass zur Verfügung stehen.

Die Sachbilanzdaten und Ergebnisse der Ökobilanz für die BTL-Herstellung wurden vollständig und transparent in den Deliverables D5.2.1, D5.2.2, D5.2.7, D.5.2.9, D. 5.2.10 und D 5.2.15 dokumentiert. Sie stehen auch in elektronischer Form für weitere Auswertungen z.B. zur Nutzung der Treibstoffe und zum Vergleich mit anderen Bio-treibstoffen zur Verfügung. Die gesamte Ökobilanz zum Vergleich der Verfahrenswege wurde einer externen kritischen Prüfung gemäss ISO14040 unterzogen.

Im letzten Projektjahr bildeten die Berechnungen und Auswertungen im Rahmen des „Overall Assessment“ in WP5.4 den Hauptteil unserer Arbeiten. Hier wurde eine Well-to-Wheel Analyse zum Vergleich der Umweltbelastungen von BTL und DME mit fossilen Kraftstoffen gerechnet und dokumentiert. Bis zum heutigen Zeitpunkt ist es nicht gelungen, einen Konsens mit den Projektpartnern bezüglich der Darstellung und Veröffentlichung der hierbei erarbeiteten Ergebnisse zu erreichen.

Die beschriebenen Arbeiten wurden durch das BFE, das Bundesamt für Bildung und Wissenschaft (BBW) und im Rahmen von Eigenleistungen von ESU-services finanziert. Beigetragen zu den Ergebnissen haben auch Projektpartner, die aus europäischen Forschungsgeldern bezahlt wurden. Die Methodik und Ergebnisse wurden im Rahmen von zwei Sommer-Universitäten interessierten Studierenden und Wissenschaftlern vorgestellt.

Introduction

The life cycle assessment (LCA) has been elaborated within the work package 5.2: “life cycle assessment” in the RENEW project¹ (Renewable Fuels for Advanced Powertrains). The project investigates different production routes for so called biomass-to-liquid (BTL) automotive fuels made from biomass. The study is described in detail in a series of reports ([1-6]). Here we summarize the main results of this LCA.

Introduction to the methodology

The goal and scope report ([1, 4]), elaborated as a first intermediate step, provides first an introduction into the methodology of life cycle assessment (LCA). The LCA method aims to investigate and compare environmental impacts of products or services that occur from cradle to grave. All environmental impacts caused by a product, e.g. 1 litre of biofuel, are assessed in a standardized way. It includes all the stages during the life cycle: the production of pesticides and fertilizers, the necessary transports, the conversion of the biomass to fuel and all emissions in the life cycle are investigated in the LCA. The method has been standardized by the International Organization for Standardization (ISO).

Goal and Scope of the study

PRODUCTION ROUTES DEVELOPED IN THE RENEW PROJECT

Within the RENEW project, different production routes for BTL-fuels, which are produced by gasification of biomass followed by a synthesis process, are further developed. These are:

- production of Fischer-Tropsch-fuel (FT) by two-stage gasification (pyrolytic decomposition and entrained flow gasification) of wood, gas treatment and synthesis (SP1);
- production of FT-fuel by two-stage gasification (flash pyrolysis and entrained flow gasification) of wood, straw and energy plants as well as CFB-gasification (circulating fluidized bed), gas treatment and synthesis, (SP2);
- BTL-DME (dimethylether) and methanol production by entrained flow gasification of black liquor from a kraft pulp mill, gas treatment and synthesis, (SP3). Biomass is added to the mill to compensate for the withdrawal of black liquor energy
- bioethanol production in different processes using different feedstock (SP4).

GOAL OF THE LCA

The goal of the LCA is to compare different production routes of BTL-fuels (FT-diesel and BTL-DME) from an environmental point of view. The two production routes for ethanol are excluded from the LCA because of lack of sufficient data. The assessment includes all process stages from well-to-tank (WTT) of BTL-fuels. The following questions are addressed in the LCA study:

- Which production route for BTL-fuels, investigated within the RENEW project, is the one with the lowest environmental impacts?²
- If there is a choice between different biomass inputs, which one leads to the lowest overall environmental impacts?
- What are the relative shares of contribution to the environmental impacts in different stages of production of the investigated fuels?
- Where are the potentials for improvement?
- How does the environmental profile of a certain fuel change if the scenario is changed (e.g. different efficiency in fuel production process; different external energy supply)?

¹ www.renew-fuel.com

² For this question probably more than one answer will be given, because a certain fuel can have the lowest environmental impacts regarding e.g. acidification but not necessarily regarding another category indicator.

The answers to these questions should support the decision on the most promising production routes for BTL-fuels that should be supported by politics and automobile manufacturers in the future. The goal of this study implies a comparative assertion of different options, which is disclosed to the public.

It is important to note that several questions are out of the scope of the LCA in the RENEW project and that it is not possible to answer these questions with data nor analysis made during this LCA study. Such questions are for example:

- What are the environmental impacts of using the fuels investigated in this study (well-to-wheel - WTW)?³
- Are there better possible uses for the biomass, e.g. as a material or a fuel in power plants and heating devices?
- Does it make sense to produce the BTL-fuels investigated in this study and to support this in agricultural policy or would it be better to use the available land resources for other purposes?⁴
- Are there better options to reduce greenhouse gas emissions or environmental impacts caused by road traffic?
- What are social and economic impacts of the investigated production chains?⁵
- Are BTL-fuels sustainable?

STAKEHOLDERS AND AUDIENCE

The stakeholders and audience of this study are defined as follows: The LCA study is elaborated for all people involved in the development of conversion processes for BTL-fuels. The results of the LCA can be used to improve the BTL-fuel production from an environmental point of view. Further parties, which might be interested in the results, are producers of biomass resources and distributors of BTL-fuels, politicians and decision makers in the automotive industry.

REFERENCE FLOW AND FUNCTIONAL UNIT

The reference flow describes in a physical unit the final product or service delivered by the investigated product systems. It is the appropriate unit for analysing different products or production routes.

The function of interest in this study is the supply of chemically bound energy to powertrains. Different types of liquid fuels can provide this function. The fuels are burned in the powertrain in order to be converted to mechanical energy that can be used for traction of vehicles.

The reference flow used in the comparison of BTL-fuel production routes is defined as the energy content expressed as the “lower heating value of the fuel delivered to the tank”.

PRODUCT SYSTEM

The LCA within the RENEW project investigates the life cycle from biomass provision to the tank and excludes the actual use of the fuel in the powertrain (well-to-tank).⁶ Figure 1 shows the major stages of the product system, which are investigated as unit processes. The conversion processes are divided into different sub-processes (e.g. gasification, gas treatment, synthesis, etc.) and are modelled in separate unit processes.

Inputs of materials, energy carriers, resource uses, etc. to the shown unit processes are followed up as far as possible. To achieve this, the recursively modelled background data of theecoinvent database are used ([8]). There are no fixed cut-off criteria in terms of a specific percentage of mass or energy inputs to the system. Relevant data gaps due to lack of data are filled as far as possible with

³ This question is addressed in other SP5 work packages (WP4) of the project ([7]).

⁴ This question is addressed in other SP5 work packages (WP 3, WP4) of the project.

⁵ This question is addressed in other SP5 work packages (WP3) of the project.

⁶ Tank-to-wheel investigations will be part of WP 5.4 ([7]). They are shown separately from the ISO LCA parts of the report.

approximations. The product system is modelled in a way that all inputs and outputs at its boundaries are elementary flows.

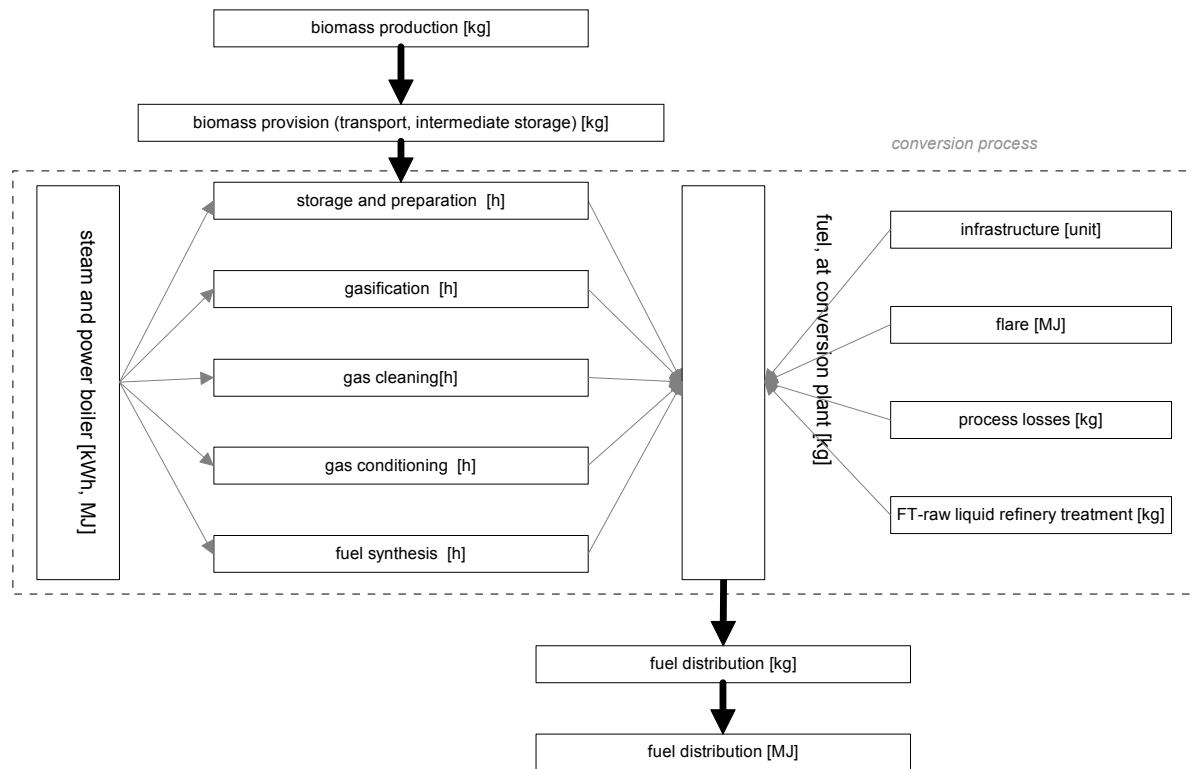


Figure 1 Flowchart of the product system of BTL-fuel with individual unit processes. The conversion process is described with nine sub-processes

MODELLING PRINCIPLE ATTRIBUTIONAL LCA

The LCA assigns the environmental impacts of foreseen production chains to the produced products. The attributional approach is used in the RENEW project. The attributional methodology aims at describing the environmentally relevant actual physical flows to and from a life cycle and its subsystems. Thus it considers only environmental impacts of the running processes and not the impacts caused by a change from one technology to another. Results are stable over time and resistant to changes in other parts of economy. This type of analysis does not reflect that, due to a decision supported by the LCA, production patterns might be changed.

MULTI-OUTPUT PROCESS MODELLING

There is no standardized way or best solution how to solve problems of by-products and further functions in life cycle inventory modelling. The ISO standard leaves different choices for the problem. Depending on the solution chosen, the results of an LCA might be quite different.

In this study, multi-output processes are divided into subsystems (where possible). If this is not possible, the approach of allocation based on different relationship principles is used as far as possible. The procedure is decided for the concrete multi-output process based on causalities and available data. The allocation between wheat straw and wheat grains is based on prices. The allocation between heat and electricity in the conversion power plant is based on the exergy content. Irrespective of the allocation approach chosen, it is intended that mass balances are correct in all cases.

SCENARIOS

Two different scenarios are considered in the modelling of the process chains. These scenarios are defined in cooperation with other work packages of SP5 in the RENEW project. These scenarios are described in a separate document, which is published on the RENEW homepage ([9]).

Starting point calculation

The so-called “starting point calculation” addresses the possible production route in the near future. Average data representing agricultural and harvesting technology of today are used for these production systems. Farms with very small production volumes, which are not supplied to the market, are not considered in the assessment. The inventory of the conversion processes is based on the actual development state of the different technologies. In a nutshell this means “assuming we would erect such a plant today, what would the plant look like?” In this scenario the operation of the biomass to biofuel plant is self-sufficient, which means that biomass is the only energy source the plant relies on. Thus, no external electricity or other non-renewable energy supply to the conversion plant is considered in the process models.

Scenario 1

In scenario 1 a modelling of a maximized fuel production is made. The supply chain is supposed to be as efficient as possible regarding biofuel production. One of the most important criteria of the evaluation is the ratio of biofuel production to needed agricultural land. The use of hydrogen improves the carbon/hydrogen-ratio and thus leads to a higher conversion rate of biomass to fuel. External electricity input into the production system is used in most of the conversion concepts for providing the necessary hydrogen.

A quite crucial point in scenario 1 is the assumption on the hydrogen supply to the biomass conversion. The way the electricity for the water electrolysis is produced has important consequences on the costs and the environmental performance of the conversion concept. Here we assume that the external electricity is provided with wind power plants. The project team considers this one option for a maximized fuel production based on renewable energy.

Although it is not realistic to get such a renewable electricity supply until 2020 for more than a small number of conversion plants, this scenario describes a direction that might be worth going. Only if there is the possibility in 2020 to produce hydrogen with wind power, the conversion rate biomass to fuel could be increased in the way modelled here. Due to the limited production capacity until 2020, this scenario does not describe a general improvement option, but an option for special locations. The influence of using the average electricity supply mix of Europe is shown in a sensitivity analysis.

For biomass production, it is assumed that inputs of fertilizers and pesticides are higher in 2000 than for today. In addition, the yields are higher than today.

Scenario 2

Scenario 2 has not been investigated in the LCA because the project partners considered it not to be relevant for the questions addressed in the LCA.

Life cycle inventory analysis

The second report describes the life cycle inventory analysis (LCI) for the LCA study ([2]). In this step of the study, data are collected for all inputs and outputs in different stages of the life cycle of BTL-fuels.

BIOMASS PRODUCTION

Three types of biomass inputs are used in the conversion to BTL-fuels. These are short rotation wood (willow-salix or poplar), miscanthus and wheat straw. The life cycle inventory data of biomass production are based on regional information investigated for Northern, Eastern, Southern and Western Europe. The data were collected by regional partners from the RENEW project. The main assumptions

about the intermediate storage of biomass are harmonized with partners from WP5.3 of the RENEW project.

Table 1 shows some key figures from the life cycle inventory analysis of biomass products and intermediate storage. A critical issue in the inventory of wheat straw is the allocation between wheat straw and wheat grains. In the base case, this allocation is made with today market prices. This gives an allocation factor of about 10% to the produced straw (on a per kg basis). A sensitivity analysis is calculated based on the energy content, which leads to an allocation factor of 43% to the produced straw.

Several influencing factors are taken into account when modelling scenario 1. These are e.g. intensified agriculture in Eastern Europe, improvements in plant species and agricultural technology, achievements of maximized yields by higher inputs of fertilizers and pesticides. The different requirements give not one direction of development. Scenario 1 neither gives a clear picture of the average biomass production in the year 2020 compared to the situation today in the starting point calculation.

Table 1 Key figures of the life cycle inventory of biomass production; allocation between wheat straw and grains based on today market price

		bundles, short-rotation wood	bundles, short-rotation wood	miscanthus-bales	miscanthus-bales	wheat straw, bales	wheat straw, bales
		starting point	scenario 1	starting point	scenario 1	starting point	scenario 1
N-fertilizer	g/kg DS	5.2	6.3	4.0	5.6	2.2	1.8
P2O5-fertilizer	g/kg DS	4.0	3.5	3.1	2.8	1.1	0.8
K2O-fertilizer	g/kg DS	6.4	5.4	5.1	4.3	0.9	1.5
Lime	g/kg DS	6.5	5.9	3.6	2.4	4.4	2.8
diesel use	g/kg DS	5.1	4.9	4.3	3.3	2.3	1.4
yield, bioenergy resource	kg DS/ha/a	10'537	12'630	14'970	20'504	3'718	4'428
yield, wheat grains	kg DS/ha/a	-	-	-	-	4'900	6'719
energy content of biomass	MJ/kg DS	18.4	18.4	18.8	18.8	17.2	17.2
losses during storage	%	7%	4%	6%	3%	6%	3%

DS : dry substance

DATA COLLECTION FOR CONVERSION PROCESSES

Data of the conversion processes were provided by the different plant developers in the RENEW project. The data are mainly based on technical modelling of such plants, which is based on experiences and knowledge gained from the research work done in the RENEW project. The data are cross-checked as far as possible with project partners doing the technical assessment of the conversion concepts. Further details about the data quality check can be found in the WP5.4-reports.

Where so far no reliable first-hand information is available (e.g. emission profiles of power plants, concentration of pollutants in effluents or the use of catalysts) assumptions are based on literature data. Thus, sometimes it is difficult to distinguish between different process routes because differences could not be investigated. Table 2 provides an overview on the data provided by different partners and the generic assumptions used for modelling of the conversion processes.

We like to emphasise that the different conversion processes investigated in this study, have different development degrees. Thus, data presented in the report represent the current development status of the respective technology. A lot of effort was put to produce LCI data as accurate as possible.

All conversion concepts are based on their optimal technology. Four concepts are investigated on a scale of 500 MW biomass input and one was investigated based on 50 MW biomass input. Some conversion concepts might be improved by increasing the plant size to up to 5 GW. This has not been considered in this study.

The products produced by the different process chains are not 100% identical with regard to their physical and chemical specifications. Therefore, a possible further use of the data in other studies or investigations has to be reflected under these circumstances. Interpretations and especially comparisons based on the data developed in this study must consider the herewith-linked technology background.

Table 2 Overview on data provided by different conversion plant developers

Concept	Centralized Entrained Flow Gasification	Centralized Auto-thermal Circulating Fluidized Bed Gasification	Decentralized Entrained Flow Gasification	Allothermal Circulating Fluidized Bed Gasification	Entrained Flow Gasification of Black Liquor for DME-production
Abbreviation	cEF-D	CFB-D	dEF-D	ICFB-D	BLEF-DME
Developer	UET	CUTEC	FZK	TUV	CHEMREC
Biomass input	Amount and type	Amount and type	Amount and type	Amount and type	Amount and type
Biomass type	Wood, straw	Wood, straw	Straw	Wood, miscanthus	Wood, black liquor
Heat and electricity use	Provided	Provided	Provided and own assumptions	Provided	Provided
Auxiliary materials	Hydrogen, Fe(OH) ₂	Filter ceramic, rape methyl ether, silica sand, quicklime, iron chelate	Nitrogen, silica sand	Nitrogen, rape methyl ether, quicklime, silica sand	No auxiliaries reported
Catalysts	Literature	Literature	Literature	Amount of zinc catalyst	Literature
Emission profile	Literature for gas firing and plant data for CO	Literature for gas firing	Literature for gas firing, plant data for H ₂ S and own calculations	Literature for gas firing and plant data for CO, CH ₄ , NMVOC	Literature for wood firing and plant data for CO, H ₂ S, CH ₄
Amount of air emissions	Calculated with emission profile and CO ₂ emissions	Calculated with emission profile and CO ₂ emissions	Calculated with emission profile and own assumptions on CO ₂ .	Calculated with emission profile and CO ₂ emissions	Calculated with emission profile and CO ₂ emissions
Effluents	Amount and concentrations	Only amount. Rough assumption on pollutants	Only amount. Rough assumption on pollutants	Only amount. Rough assumption on pollutants	Amount and TOC concentration. Rough assumption on pollutants
Wastes	Amount and composition	Only amount	Only amount	Only amount	Only amount
Fuel upgrading	Included in process data	Standard RENEW model for upgrading	Standard RENEW model for upgrading	Standard RENEW model for upgrading	Included in process data
Products	BTL-FT, electricity	FT-raw product, electricity	FT-raw product, electricity	FT-raw product, electricity	BTL-DME

KEY FIGURES FOR STARTING POINT CALCULATION

Key figures on the starting point calculation are summarized in Table 3. Here we show the conversion rate from biomass to fuel in terms of energy, the plant capacity and the production volume per hour. The BLEF-DME⁷ process has the highest conversion rate followed by the cEF-D process. The ICFB-D process has a rather low conversion rate (biomass to fuel) because it produces large amounts of electricity as a by-product. The electricity is only burdened with the direct air emissions from the power plant, but not with the production of biomass. This is a worst-case assumption for the BTL-fuel and reflects the project idea of mainly producing fuel.

⁷ BLEF-DME stands for Entrained Flow Gasification of Black Liquor for DME (dimethylether)-production, see Table 3 for further abbreviations of production processes.

Table 3 Starting point calculation. Key figures of conversion processes: conversion rate between biomass input and BTL-fuel output in terms of energy

	Biomass	Wood	Straw	Wood	Straw	Straw	Wood	Miscanthus	Wood
	Process	Centralized Entrained Flow Gasification	Centralized Entrained Flow Gasification	Centralized Autothermal Circulating Fluidized Bed Gasification	Centralized Autothermal Circulating Fluidized Bed Gasification	Decentralized Entrained Flow Gasification	Allothermal Circulating Fluidized Bed Gasification	Allothermal Circulating Fluidized Bed Gasification	Entrained Flow Gasification of Black Liquor for DME-production
	Product Code	BTL-FT	BTL-FT	BTL-FT	BTL-FT	BTL-FT	BTL-FT	BTL-FT	BTL-DME
	Developer	cEF-D	cEF-D	CFB-D	CFB-D	dEF-D	ICFB-D	ICFB-D	BLEF-DME
conversion rate (biomass to all liquids)	energy	53%	57%	40%	38%	45%	26%	26%	69%
capacity biomass input (MW)	power	499	462	485	463	455	52	50	500
all liquid products (diesel, naphtha, DME)	toe/h	22.5	22.3	16.6	15.0	17.5	1.1	1.1	29.0

Toe: tonnes oil equivalent with 42.6 MJ/kg

KEY FIGURES FOR SCENARIO 1

The idea of scenario 1 is to maximize the biomass conversion rates. Due to external inputs of electricity, it is even possible to achieve biomass to fuel conversion rates higher than 100%. We summarize the key figures for scenario 1 in Table 4.

The conversion rates vary quite a lot between the different processes. The conversion rate of the ICFB-D process (55%) is in the range of the figures presented by other plant operators for the starting point calculation. There is no external hydrogen input for this conversion process.

According to the data provided and used, the cEF-D process has the highest conversion rate (108%). The process CFB-D has a similar conversion rate like the ICFB-D process, but with quite higher amount of hydrogen input. The differences and reasons for the technical differences are further analysed in WP5.4 of the RENEW project.

The demand on external electricity ranges between 135 and 515 MW. With an installed capacity of 1.5 MW per wind power plant, a wind park with 100 to 400 units of wind power plants is required to cover the demand of one conversion plant. The production of biofuels would be quite dependent on the actual electricity supply situation. The dEF-D process is strictly speaking not producing a fuel from biomass, but from wind energy because more than half of the energy input is electricity.

Table 4 Scenario 1. Key figures of conversion processes. Ratio biomass input to fuel output in terms of energy and hydrogen input

	Biomass	Wood	Wood	Straw	Straw	Wood	Miscanthus
	Process	Centralized Entrained Flow Gasification	Centralized Autothermal Circulating Fluidized Bed Gasification	Centralized Autothermal Circulating Fluidized Bed Gasification	Decentralized Entrained Flow Gasification	Allothermal Circulating Fluidized Bed Gasification	Allothermal Circulating Fluidized Bed Gasification
	Product Code	BTL-FT	BTL-FT	BTL-FT	BTL-FT	BTL-FT	BTL-FT
	Developer	cEF-D	CFB-D	CFB-D	dEF-D	ICFB-D	ICFB-D
conversion rate (biomass to all liquids)	energy	108%	57%	56%	91%	55%	57%
capacity biomass input (MW)	power	499	485	464	455	518	498
external electricity, including H2 production	MW	489	135	149	515	-	-
hydrogen input conversion	kg/kg product	0.24	0.13	0.13	0.34	-	-
all liquid products (diesel, naphtha, DME)	toe/h	45.6	23.4	21.9	34.9	24.1	24.0

toe tonnes oil equivalent with 42.6 MJ/kg

SENSITIVITY ANALYSIS

A sensitivity analysis within the life cycle inventory analysis covers the following most important issues:

- Wheat grains and wheat straw are produced together. In the base case, we assume an allocation of all inputs and outputs based on today's market price. This attributes only a small part (10%) of the mass and energy flows to the production of straw. A sensitivity analysis is performed with an allocation based on the energy content, which is similar to the amount of dry matter of straw and grains harvested.
- The ICFB-D process has a plant layout designed for the cogeneration of electricity and heat together with BTL-FT production. In the base-case, all environmental impacts of biomass pro-

vision are allocated to the fuel production. A sensitivity analysis is performed that takes into account that biomass is also a necessary input for the electricity delivered to the grid.

- A crucial point in scenario 1 is the provision of electricity for the production of hydrogen. In the scenario 1 base case, a supply from wind power plants is assumed. This is not realistic for a large-scale production in Europe due to capacity limitations. Thus, a sensitivity analysis is performed taking into account the average central European electricity mix.

ELECTRONIC DATA FORMAT AND BACKGROUND DATA

All inventory data investigated in this report are recorded in the EcoSpold data format. The format follows the ISO-TS 14048 recommendations for data documentation and exchange formats. It can be used with all major LCA software products ([5]).

All background data, e.g. on fertilizer production or agricultural machinery are based on theecoinvent database ([8]). They were investigated according to the same methodological rules as used in this study. The quality of background data and foreground data is on a comparable and consistent level and all data are fully transparent.

Life cycle impact assessment and interpretation

The third report elaborates on the life cycle impact assessment (LCIA) and the interpretation of the life cycle assessment ([3]). The data describing emissions and resource uses are calculated over the full life cycle. In a second step, they are aggregated to the list of category indicators described in Table 5. The category indicator results are interpreted in view of the questions addressed in this study.

CATEGORY INDICATORS IN LIFE CYCLE IMPACT ASSESSMENT

The elementary flows from the life cycle inventory analysis are characterised according to commonly accepted methodologies. The life cycle impact assessment (LCIA) covers several impact category indicators. These indicators characterise and summarise the contribution of individual emissions or resource uses to a specific environmental problem. The higher the figure, the higher is the potential environmental impact resulting from emissions and resource uses over the life cycle of the investigated product. There is no weighting used across the category indicators.

The inclusion or exclusion of category indicators was discussed within the project team. The main criteria for the choice of category indicators were the reliability and the acceptance of the existing LCIA methods by all partners.

This life cycle impact assessment evaluates the use of primary energy resources, the emission of greenhouse gases and the potential contribution of elementary flows to photochemical oxidant formation, acidification and eutrophication. Besides the LCIA results, two cumulative results of elementary flows are presented. The water use sums up all demands of water in the life cycle including rainwater but excluding turbine water. For land competition, all surface land uses are summed up as square metre used over one year.

Table 5 Category indicators investigated in this study

Category indicator	Abbreviation	Description of the problem and relevance for the processes investigated
Cumulative energy demand	CED	The cumulative energy demand of biomass, other renewable, fossil and nuclear energy resources is characterised and summed up with the reference unit MJ-eq (mega joule equivalents).
Abiotic depletion	ADP	Important is the use of non-renewable energy resources. The depletion of other abiotic resources is included in this indicator as well. The use of uranium for electricity generation is included with a smaller characterisation factor compared to the CED.
Global warming	GWP	Contribution to the problem of climate change evaluated with the global warming potential. Main reason for promotion of BTL-fuels.
Photo-chemical oxidation, non-biogenic	POCP, non biogenic	Evaluation of potential contribution to the formation of summer smog. The production processes and agriculture have some relevance. It has to be noted that only a small part of NMVOC gets a characterisation factor according to the CML methodology. All unspecified NMVOC are not assessed. Here we do not evaluate biogenic emissions from plant growing, but other biogenic emission, e.g. CO from biomass burning.
Acidification	AP	Emission of acid substances contributing to the formation of acid rain. Relevant are air emissions from agriculture and fuel combustion in transport processes.
Eutrophication	EP	Overfertilization of rivers and lakes due to human-made emissions. High relevance for the use of fertilizers in agricultural processes.

Inventory results

Water use		Water is a scarce resource especially in Southern European countries. The indicator includes all types of water use including rainfall on the agricultural area, irrigation water and direct uses of water in conversion processes.
Land competition		Fertile land area is the most important resource for production of biomass and there are differences between different biomass types. It is recorded in m2a (square metre occupied for one year).

ANALYSIS OF CATEGORY INDICATORS RESULTS IN THE STARTING POINT CALCULATION

The main drivers regarding all environmental category indicators are analysed in the study. Here we explain the results for the more realistic starting point calculation. Detailed results related to the scenario 1 can be found in the full report ([3]).

The major elementary flow regarding the cumulative energy demand is the energy bound in harvested biomass. Thus, the biomass production process accounts for 80%-90% of the cumulative energy demand in the starting point calculation.

Crude oil (50%-60%) and natural gas use are the major contributions to abiotic depletion. The use of uranium has only a small contribution within this category indicator. The resource extraction takes place in many different unit processes of the life cycle.

Fossil carbon dioxide (50%-70%) and dinitrogen monoxide (20%-40%) are the major elementary flows with respect to climate change. Methane from off-gases and emissions of the internal power plant in the conversion plant accounts for up to 15% of the total greenhouse gas emissions.

A range of different substances is important with regard to the photochemical oxidation. The most important ones are sulphur dioxide, carbon monoxide and different NMVOC. Dimethylether emissions are relevant in the distribution of BTL-DME.

Acidification is caused by ammonia, sulphur dioxide and nitrogen oxides in about equal shares. The emissions of acidifying substances can be attributed to the biomass production, direct air emissions of these conversion processes that release off-gases and emissions from the internal power plant. The operation of transport devices and tractors is also an important source of such emissions.

Eutrophication is caused by nitrates, phosphates, ammonia and nitrogen oxides. A share of more than 50% of the release of eutrophication emissions can be attributed in most cases directly to the agricul-

tural production process. Other important sources of emissions are the direct air emissions from the conversion process and power plant. The production of fertilizers contributes in smaller amounts.

The water use is fully dominated by rainwater used in agriculture. Other water uses e.g. in the conversion plant or for irrigation are not very important.

The results for land competition are dominated by the agricultural biomass production, which accounts for about 90% of all land uses. For the conversion routes based on straw, this share is reduced to 80%. Because of the allocation procedure, only a small part of the land used for wheat cultivating is attributed to straw. Several wood-consuming background processes, e.g. storage facilities, get a share of up to 20% in the land occupation of straw-conversion routes.

COMPARISON OF CONCEPTS IN THE STARTING POINT CALCULATION

In the following, the category indicator results of different conversion concepts are compared from well to tank.

The ranking of the different processes is visualized in Table 6. The process with the lowest environmental impacts is set to 100% in this evaluation (per impact category). The table shows the environmental impacts of all processes in comparison to the process with the lowest impacts. In addition, processes with just 15% higher environmental impacts are ranked “lowest”. Processes with up to 16% to 50% higher impacts than the “lowest” are ranked as “low impacts” processes. Different colours help to identify these levels.

Many category indicators like acidification, eutrophication, water use and land competition show an absolutely dominating influence of the agricultural production of biomass. Thus, the type of biomass and the conversion rate are important in the comparison.

The conversion rate plays a major role in the formation of air emissions from the conversion plant. It is assumed that the higher the conversion rate, the lower is the share of biogenic carbon dioxide and thus also other pollutants which are released to the ambient air. Therefore, the improvement of the conversion rates and the reduction of the environmental burdens of the biomass production itself are the main drivers for further environmental improvements of the BtL-chains, within the same scenario.

The conversion processes cEF-D⁸ and BLEF-DME have the lowest environmental impacts in the assessment with regard to the environmental indicators cumulative energy demand, global warming, photochemical oxidation, acidification, eutrophication and abiotic resource depletion. They are followed by CFB-D and dEF-D process. The ICFB-D process shows the highest environmental impacts due to a process design with a considerably high amount of electricity production and thus a lower biomass to fuel conversion rate.

In the case of the conversion of wood, the cEF-D process has between 15% and 30% higher impacts than the production of dimethylether with regard to the category indicators cumulative energy demand, abiotic depletion, global warming, eutrophication, water and land use. This can mainly be explained with the higher conversion rate of the BLEF-DME process. However, the cEF-D process has 35% lower impacts in the category indicator photochemical oxidation, because the emissions in the dimethylether distribution are higher. CFB-D has more than 65% higher impacts than cEF-D and BLEF-DME. The ICFB-D process has a rather low conversion rate and thus has higher impacts in all category indicators except photochemical oxidation, which does not include biogenic emissions.

The comparison of processes based on wood or straw depends not only on the type of biomass, but also on the difference in the conversion rate. The CFB-D process based on wood performs slightly better than processes based on straw regarding the category indicators cumulative energy demand, abiotic depletion, global warming potential and eutrophication potential. For the cEF-D concept, the process with straw has lower environmental impacts than the conversion of wood.

⁸ cEF-D stands for centralized entrained flow gasification, BLEF-DME stands for entrained flow Gasification of Black Liquor for DME (dimethylether)-production. See Table 2 for further abbreviations.

In the case of straw conversion, the cEF-D process has the lowest impacts in all category indicators followed by the dEF-D and the CFB-D process. There is only one conversion process using miscanthus (ICFB-D). Thus, a direct comparison with other conversion concepts is not possible.

Table 6 Starting point calculation. Ranking of the different conversion concepts with respect to the category indicators based on the energy content of the fuel delivered to the tank

	Biomass	Miscanthus	Straw	Straw	Straw	Wood	Wood	Wood	Wood
		Allothermal Circulating Fluidized Bed Gasification	Centralized Autothermal Circulating Fluidized Bed Gasification	Decentralized Entrained Flow Gasification	Centralized Entrained Flow Gasification	Centralized Autothermal Circulating Fluidized Bed Gasification	Allothermal Circulating Fluidized Bed Gasification	Centralized Entrained Flow Gasification	Entrained Flow Gasification of Black Liquor for DME-production
Process		ICFB-D	CFB-D	dEF-D	cEF-D	CFB-D	ICFB-D	cEF-D	BLEF-DME
Code		TUV	CUTEC	FZK	UET	CUTEC	TUV	UET	CHEMREC
Company		BTL-FT	BTL-FT	BTL-FT	BTL-FT	BTL-FT	BTL-FT	BTL-FT	BTL-DME
Product									
Category indicator	Product								
cumulative energy demand	MJ-Eq	252%	186%	147%	115%	169%	263%	128%	100%
abiotic depletion	kg Sb eq	255%	260%	155%	121%	165%	257%	128%	100%
global warming (GWP100)	kg CO2 eq	226%	252%	128%	104%	171%	224%	116%	100%
photochemical oxidation, non-b	kg C2H4	244%	361%	258%	100%	292%	245%	104%	141%
acidification	kg SO2 eq	256%	192%	190%	100%	181%	289%	130%	133%
eutrophication	kg PO4--- eq	453%	207%	162%	106%	176%	300%	117%	100%
water use	m3	780%	151%	127%	100%	672%	1034%	508%	396%
land competition	m2a	631%	155%	139%	100%	610%	959%	458%	358%
	Min		Max						
	Lowest impacts		100%		115%				
	Low impact		116%		150%				
	High impact		151%		250%				
	Highest impacts		251%						

The data of biomass conversion have been investigated in detail for different sub-processes of the process. The aim was to compare also different sub-processes and to see the relative share of sub-processes in relation to the total environmental impacts.

In general, many category indicators results of the sub-processes of the conversion process are quite dependent on the biomass input. The share of biomass production and provision is in most cases higher than 90% with respect to the cumulative energy demand, water use and land competition. The second most important factor are the air emissions with off-gases or due to the energy production in the on-site power plant. This is especially important for the release of substances contributing to photochemical oxidation. Thus, the sub-processes using more heat and electricity contribute more to the total environmental impacts.

The detailed analysis shows that it is difficult to compare different conversion concepts based on the detailed results of single process stages, because the allocation of environmentally relevant streams within the plant might be quite different. Thus, the importance of the different sub-processes might be distinctly different even if the overall results are quite similar.

SENSITIVITY ANALYSIS

The allocation criterion between straw and wheat grains has an important influence on the total impacts of all processes that use straw as an input. Allocation by energy content results in up to three times higher environmental impacts per MJ of fuel produced from straw as compared to allocation by actual market prices.

A sensitivity analysis of the ICFB-D process was made. Heat and electricity produced simultaneously are accounted for as equal products to liquid fuels according to their exergy content. The results of different category indicators are reduced by 10% to 30%, if the wood input for the ICFB-D process is reduced by about 30% according to the exergy shares of fuel, heat and electricity production.

FUEL YIELDS PER HECTARE

The fuel yield per hectare is an important yardstick for comparing different types of biomass and different process routes. The calculation includes the full life cycle from seed to tank, e.g. also biomass losses during storage and land occupation for processes other than biomass production. All land uses (not only the agricultural land area) are included in this calculation.

The fuel yield of energy crops per hectare is between 860 to 2300 kg oil equivalents. Processes based on straw show a fuel yield of up to 8200 kg oil equivalents per hectare, if the agricultural land is allocated to the straw based on its share of the today revenue of wheat production. The yield of processes based on straw is only 1300 to 1900 kg oil equivalents per hectare if the allocation is based on the energy content of grains and straw.

These fuel yield figures highlight that it is preferable to use by-products, such as straw or wastes, for biofuel production. Nevertheless, it has to be taken into account that their potential is limited and that a rising demand will lead to higher prices, and, because of the allocation criterion (revenue), also to higher environmental impacts.

COMPARISON OF CONCEPTS IN SCENARIO 1

The main idea of scenario 1 is an increase of the fuel yield per hectare. The use of hydrogen produced by electrolysis is considered an interesting option for the conversion process. Two out of six conversion concepts use electric energy in the same amount like the direct biomass input. CHEMREC did not provide data for BLEF-DME in scenario 1.

All processes show a considerable increase of the fuel yields per hectare of between 60% and 200% if hydrogen is used in the process. A fuel yield between 2100 and 4100 kg oil equivalent per hectare is possible when using miscanthus and wood.

In scenario 1, the importance of process steps is influenced largely by the external electricity input. The process stage, which uses hydrogen produced with external electricity, is more important concerning the environmental indicators that are influenced by the electricity production, e.g. cumulative energy demand. The biomass input stage is relevant for those category indicators, like land use, which are dominated by impacts from agriculture.

The cEF-D process using wood has the lowest impacts of all investigated concepts with respect to several category indicators except the cumulative energy demand, water use and land competition. This can be explained with the highest conversion rate of all processes. Because of the lower environmental impacts of straw production in water use and land competition, the dEF-D process has a lower impact on these category indicators. The ICFB-D concept is modelled without an input of external energy. Thus, it has the lowest cumulative energy demand, because the supply of wind electricity involves a rather low conversion efficiency of the primary energy. The dEF-D process with straw has the lowest impacts with respect to eutrophication potential, water use and land competition.

Comparing straw based processes, the process of FZK (dEF-D) shows the lowest impacts except cumulative energy demand, which is highest. These low impacts can be explained mainly by the higher conversion rate of the dEF-D process compared with the CFB-D concept.

Comparing wood based processes, the cEF-D of UET shows the lowest impacts except cumulative energy demand, where the ICFB-D process of TUV has a lower impact because it does not use external electricity.

A clear overall ranking with regard to the use of different biomass resources cannot be made. In addition, a clear ranking of the different conversion processes is not possible, because results show trade offs between the different category indicators. A formal weighting between category indicators, which would bridge these trade-offs, must not be used in comparative LCA studies according to the ISO standards.

Table 7 Scenario 1 with wind power used in hydrogen production. Ranking of the different conversion concepts with respect to the category indicators based on the energy content of the fuel delivered to the tank

	Biomass	Miscanthus	Straw	Straw	Wood	Wood	Wood
		Allothermal Circulating Fluidized Bed Gasification	Centralized Autothermal Circulating Fluidized Bed Gasification	Decentralized Entrained Flow Gasification	Centralized Autothermal Circulating Fluidized Bed Gasification	Allothermal Circulating Fluidized Bed Gasification	Centralized Entrained Flow Gasification
Process							
Code		ICFB-D	CFB-D	dEF-D	CFB-D	ICFB-D	cEF-D
Company		TUV	CUTEC	FZK	CUTEC	TUV	UET
Category indicator	Product	BTL-FT	BTL-FT	BTL-FT	BTL-FT	BTL-FT	BTL-FT
cumulative energy demand	MJ-Eq	100%	219%	292%	207%	112%	218%
abiotic depletion	kg Sb eq	101%	257%	160%	257%	134%	100%
global warming (GWP100)	kg CO2 eq	119%	261%	133%	254%	151%	100%
photochemical oxidation, non-b	kg C2H4	139%	238%	170%	226%	155%	100%
acidification	kg SO2 eq	125%	163%	118%	209%	175%	100%
eutrophication	kg PO4--- eq	336%	212%	100%	237%	212%	102%
water use	m3	573%	163%	100%	929%	959%	489%
land competition	m2a	331%	147%	100%	611%	622%	319%
	Min	Max					
Lowest impacts	100%	115%					
Low impact	116%	150%					
High impact	151%	250%					
Highest impacts	251%						

A sensitivity analysis was performed for the use of average European electricity mix instead of wind power. The ICFB-D process (by TUV) does not use an external hydrogen production and thus no electricity from the grid. Thus, it shows a better performance in this analysis than the other processes with regard to the global warming potential, cumulative energy demand and photochemical oxidation. On the other side, it has higher impacts on the category indicators directly related to biomass production (eutrophication, water and land use).

The CFB-D process (by CUTEC) using straw has lower or about the same results as the process of dEF-D (by FZK) for the category indicators cumulative energy demand, abiotic depletion, global warming potential, POCP and AP. For eutrophication, land and water use, it has slightly higher impacts. So there is no clear overall ranking among the conversion concepts.

Among the two processes converting wood and using hydrogen (cEF-D and CFB-D process), the cEF-D process (by UET) has slightly higher impacts on the electricity dominated indicators abiotic depletion, global warming, POCP and AP due to the higher external electricity demand of the cEF-D process. The CFB-D concept (by CUTEC) has slightly higher impacts for category indicators related to biomass production (cumulative energy demand and eutrophication).

The electricity mix changes some of the results of the comparison quite significantly. The ranking according to the cumulative energy demand, photochemical oxidation, eutrophication, water and land competition remains about the same. Regarding abiotic depletion and global warming, the differences between the process routes get more significant.

Producing hydrogen with electricity will only make sense if renewable energy, e.g. wind power, is available in very large capacities and with a secure supply. Generally, the use of hydrogen produced via electrolysis and using the today electricity mix would be a clear disadvantage regarding most of the evaluated category indicators. Because the necessary capacities of wind power will not be available at many conversion plant locations, this scenario does not describe the average nor an achievable situation of BTL-production in the year 2020.

IMPROVEMENT OPTIONS

Different improvement options are identified from an environmental point of view. The most important one is the increase of the biofuel yield from a given amount of biomass. This reduces the input of biomass and decreases the losses. e.g. in form of air pollutants or effluents.⁹

⁹ A linear relationship between carbon losses and following emissions to air accompanying the biogenic CO₂ emissions is assumed.

Another conclusion is to improve the environmental profile of the biomass production itself, because this analysis shows that the biomass production has a dominating influence on most of the environmental indicators. Using wastes and by-products is therefore preferable with respect to some category indicators, but not always possible. Possibilities for such an improvement have not been evaluated in detail. Detailed studies of agricultural production show that improvements are not easy to achieve. Different influencing factors like e.g. fertilizer and pesticide use, diesel consumption and level of yields have to be balanced out to find an optimum solution. Also the use of wood from forests, produced without using fertilizers and pesticides, might be a viable option for the provision of biomass not yet investigated.

The use of after treatment technologies to reduce the emissions to air has not been studied in detail. It is assumed that all conversion plants have to meet the legal emissions limits, but do not further reduce the emissions. Such an after treatment might reduce the direct emissions, but might lead to higher indirect impacts e.g. due to surplus energy use or necessary auxiliary materials and certainty to higher costs, not considered in the economic assessment. Further research would be necessary to identify the optimum solutions.

For some processes, auxiliary inputs, e.g. quicklime, are found to be an important contribution to some category indicators. Thus, further focus should be put on reducing the necessary input. In addition, a separate refinery treatment of Fischer-Tropsch raw products can increase the environmental impacts slightly.

Nutrients, which are bound in the biomass, such as phosphorous, are lost with the disposal of ashes, sludge, slag or effluents. Recovering these nutrients and recycling them for a use in agriculture might be another option to improve the overall performance.

All conversion concepts are investigated on a scale of 500 MW biomass input. Some conversion concepts might be improved by increasing the plant size to up to 5 GW. This has not been considered in this study.

Conclusions

In general, this study confirms the knowledge already gained in several LCA studies of biofuels. The type of biomass input and the conversion rate to the final fuel are quite important with respect to the environmental evaluation of all types of biofuels. Direct emissions of the conversion plant and transport issues are less relevant as long as legal limits are maintained and biomass is not transported over very large distances.

Limitations of the study

Environmental impacts due to the use of pesticides and the emissions of heavy metals in agricultural production are not assessed with the category indicators used in this study. These substances have toxicological effects on animals, plants and human beings.

With regard to the category indicators of toxicological effects there was no consensus in the project group whether or not the requirements of ISO 14044, 4.4.2.2.3 are fulfilled by LCIA methods assessing such impacts. Toxicology indicators are not included in the study and the importance of this decision with respect to the comparison of the conversion routes has not been evaluated in the final report.

The exclusion of certain category indicators might be quite important regarding the ranking of different conversion processes. The authors of this study consider the exclusion of toxicity impacts as a major shortcoming of this study. Such effects should be taken into account especially if it comes to a comparison between fuels made from agricultural biomass and fossil fuels. Further research on the definition of reliability within the ISO standards and a consensus finding process for the best available methodologies for toxicological effects is necessary and currently ongoing.

Outlook

This life cycle assessment study compares different concepts of BTL-fuel production based on the status of technology development in the year 2006. Further improvements can be expected in all technologies. Thus, this study is only valid for today and it might be possible that the ranking of different conversion concepts must be revised in future. The results of the study should be reconsidered as soon as updated data are available or first commercial plants are in operation.

The starting point calculation highlights the differences in environmental impacts caused by different conversion concepts and of different types of biomass inputs. It can serve as a first basis for the comparison of different conversion concepts. Scenario 1 can be used to evaluate the possible maximized fuel yields, if large quantities of surplus electricity are available to produce hydrogen for the process. Several improvement options have been identified in the study.

Critical review

APPROACH

The goal of this study implies a comparative assertion of different options, which is disclosed to the public. Because of this, a critical review by three external LCA experts has been made. The review ensures that all stages of the LCA are conducted according to the ISO standards developed for the methodology of LCA. The full critical review has been published with the detailed reports.

SUMMARY

*First of all, we should clearly state what this LCA is **not**. Most importantly, it is not a full (cradle-to-grave or well-to-wheel) LCA, in full accordance with Goal & scope. Therefore, no conclusions can be drawn on the relative virtues of the fuels investigated **as fuels for use in automotive transport**. It is also not a comparative study of the type "fossil- versus biomass-based" fuels. Actually this topic is hardly mentioned and even the more established biofuels (bio-ethanol and bio-diesel) are not treated, although the former had been on the agenda originally. No comparative energy balances, no CO₂-balances (relative to fossil fuels). These comparisons are, of course, very interesting from the point of view "climate change" and should be done in the near future.*

*Within the limitations of this study, which are clearly stated, **the requirements by ISO 14040/44 are fulfilled**.*

This study should not be an end in itself, but rather a starting point for more comprehensive studies aiming at the urgent questions whether or not biomass-based fuels will be able to replace at least part of the fossil fuels in Europe. This automatically leads to the next problem, since the classical ("attributive") LCA is clearly not suited for studies involving a drastic change of the economic and technological background. Will the more recent "consequential" LCA (Ekvall 1999; Weidema et al. 1999; Weidema 2002), which in principle takes into account changes brought about by a new technology, be suitable for systems of that size? Or should these problems dealt with using other instruments? The review panel cannot yet give a clear recommendation.

In future work, the LCIA should be extended in order to recognise and finally prevent problem shifting. This is the foremost duty of the instrument LCA.

(Walter Klöpffer (chair), Richard van den Broek and Lars-Gunnar Lindfors, June 2007)

Well-to-Wheel analysis of environmental impacts

In 2007, ESU-services has calculated and documented the environmental impacts of using BTL-fuels in well-to-wheel analysis for the overall assessment in WP5.4 [7]. Emission data measured in the project have been considered for this calculation. The environmental impacts of using BTL and DME have been compared with using fossil fuels in cars. Until End of 2007 it was not possible to achieve a consensus between the project partners about the publication of these results.

Summer School on Renewable Motor Fuels

ESU-services has presented LCA results on the first and second European Summer School on Renewable Motor Fuels [10-13].

Abbreviations and Glossary

ADP	Abiotic depletion
AP	acidification potential
BLEF-DME	Entrained Flow Gasification of Black Liquor for DME-production
BLG	black liquor gasification
CED	cumulative energy demand
cEF-D	Centralized Entrained Flow Gasification
CFB	circulating fluidized bed
CFB-D	Centralized Autothermal Circulating Fluidized Bed Gasification
dEF-D	Decentralized Entrained Flow Gasification
DME	dimethylether
DS	dry substance
E-1	Exponential description of figures. The information 1.2E-2 has to be read as $1.2 \cdot 10^{-2} = 0.012$
EP	Eutrophication potential
FT	Fischer-Tropsch (synthesis)
GW	Gigawatt
GWP	global warming potential
ha	hectare
ICFB-D	Allothermal Circulating Fluidized Bed Gasification
ISO	International Organization for Standardization
LCA	life cycle assessment
LCI	life cycle inventory analysis
LCIA	life cycle impact assessment
MW	Megawatt
NMVOG	Non-methane volatile organic compounds
POCP	photochemical ozone creation potential (summer smog)
RENEW	Renewable Fuels for Advanced Powertrains
RER	Country code for Europe
SP	Sub-Project in RENEW. SP5 deals with the assessment of different BTL-fuel production processes
toe	tonnes oil equivalent with 42.6 MJ/kg
UCTE	Union pour la Coordination du Transport de l'Electricité
WTT	well-to-tank
WTW	well-to-wheel

Literature

1. Jungbluth N, Frischknecht R, & Faist Emmenegger M, *Life Cycle Assessment for BTL-fuel production: Goal and Scope Definition*. 2005, RENEW - Renewable Fuels for Advanced Powertrains, Sixth Framework Programme: Sustainable Energy Systems, Deliverable: D 5.2.2 (unpublished), ESU-services: Uster.
2. Jungbluth N, Frischknecht R, Faist Emmenegger M, Steiner R, et al., *Life Cycle Assessment of BTL-fuel production: Inventory Analysis*. 2007, RENEW - Renewable Fuels for Advanced Powertrains, Sixth Framework Programme: Sustainable Energy Systems, Deliverable: D 5.2.7., ESU-services: Uster. Retrieved from <http://www.renew-fuel.com>.
3. Jungbluth N, Frischknecht R, Faist Emmenegger M, Steiner R, et al., *Life Cycle Assessment of BTL-fuel production: Life Cycle Impact Assessment and Interpretation*. 2007, RENEW - Renewable Fuels for Advanced Powertrains, Sixth Framework Programme: Sustainable Energy Systems, Deliverable: D 5.2.10., ESU-services: Uster. Retrieved from <http://www.renew-fuel.com>.
4. Jungbluth N, Frischknecht R, Faist Emmenegger M, & Tuchschnid M, *Life Cycle Assessment of BTL-fuel production: Goal and Scope Definition (revised)*. 2007, RENEW - Renewable Fuels for Advanced Powertrains, Sixth Framework Programme: Sustainable Energy Systems, Deliverable: D 5.2.2, ESU-services Ltd.: Uster. Retrieved from <http://www.renew-fuel.com>.
5. Jungbluth N & Schmutz S, *Inventory dataset: EcoSpold/Gabi/Excel*. 2007, RENEW - Renewable Fuels for Advanced Powertrains, Sixth Framework Programme: Sustainable Energy Systems, Deliverable: D 5.2.9, ESU-services Ltd.: Uster. Retrieved from <http://www.renew-fuel.com>.
6. Jungbluth N, Frischknecht R, & Faist Emmenegger M, *Review of LCA case studies for BTL-fuel production*. 2004, RENEW - Renewable Fuels for Advanced Powertrains, Sixth Framework Programme: Sustainable Energy Systems, Deliverable: D 5.2.1, ESU-services: Uster.
7. Jungbluth N, Tuchschnid M, Büsser S, & Frischknecht R, *Life Cycle Assessment of using BTL-fuels*. 2007, RENEW - Renewable Fuels for Advanced Powertrains, Sixth Framework Programme: Sustainable Energy Systems, (calculation and documentation for WP5.4, unpublished), ESU-services Ltd.: Uster.
8. ecoinvent Centre, *ecoinvent data v1.3, Final ecoinvent reports No. 1-16*. 2006, CD-ROM, ISBN 3-905594-38-2, Swiss Centre for Life Cycle Inventories: Duebendorf, Switzerland. Retrieved from www.ecoinvent.org.
9. SP5-Partners, *Definition of the scenarios and boundary conditions used to investigate the different biofuel production pathways - well to tank - Revision 2007*. 2007, RENEW - Renewable Fuels for Advanced Powertrains, Sixth Framework Programme: Sustainable Energy Systems, Europäisches Zentrum für erneuerbare Energie: Güssing.
10. Jungbluth N & Frischknecht R. *Life cycle assessment of BtL pathways*. in *1st European Summer School on Renewable Motor Fuels*. 2005. Stöhr M, Birkenfeld: Baum Consult. Retrieved from <http://www.baum-consult.de/Renew/default1.htm>.
11. Tuchschnid M & Jungbluth N. *Results of the life cycle assessment of different biomass fuels (Presentation Slides)*. in *2nd European Summer School on Renewable Motor Fuels*. 2007. Stöhr M, Warsaw: Baum Consult. Retrieved from <http://www.baum-consult.de/Renew/> on 21.9.2007.
12. Tuchschnid M, Jungbluth N, & Frischknecht R. *Life Cycle Assessment of biofuels (Presentation Slides)*. in *2nd European Summer School on Renewable Motor Fuels*. 2007. Stöhr M, Warsaw: Baum Consult. Retrieved from <http://www.baum-consult.de/Renew/> on 21.9.2007.
13. Tuchschnid M, Jungbluth N, & Frischknecht R. *Life cycle assessment of BtL pathways (Paper)*. in *2nd European Summer School on Renewable Motor Fuels*. 2007. Stöhr M, Warsaw: Baum Consult. Retrieved from <http://www.baum-consult.de/Renew/> on 21.9.2007.